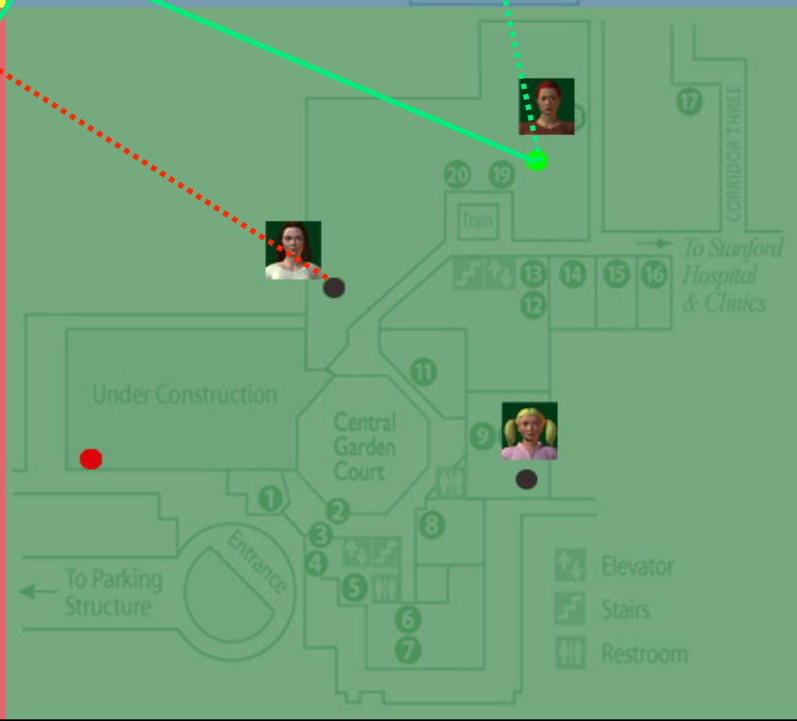
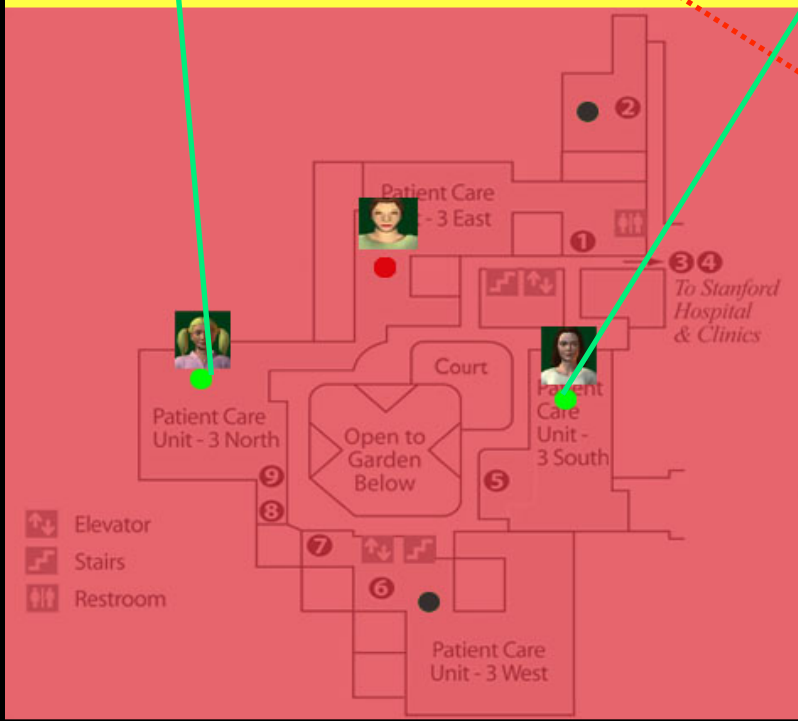
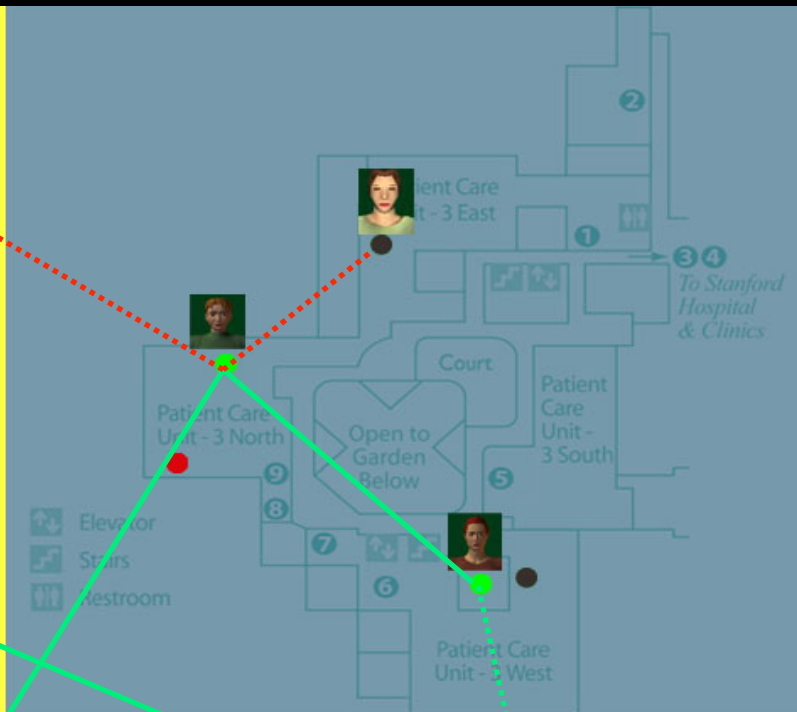
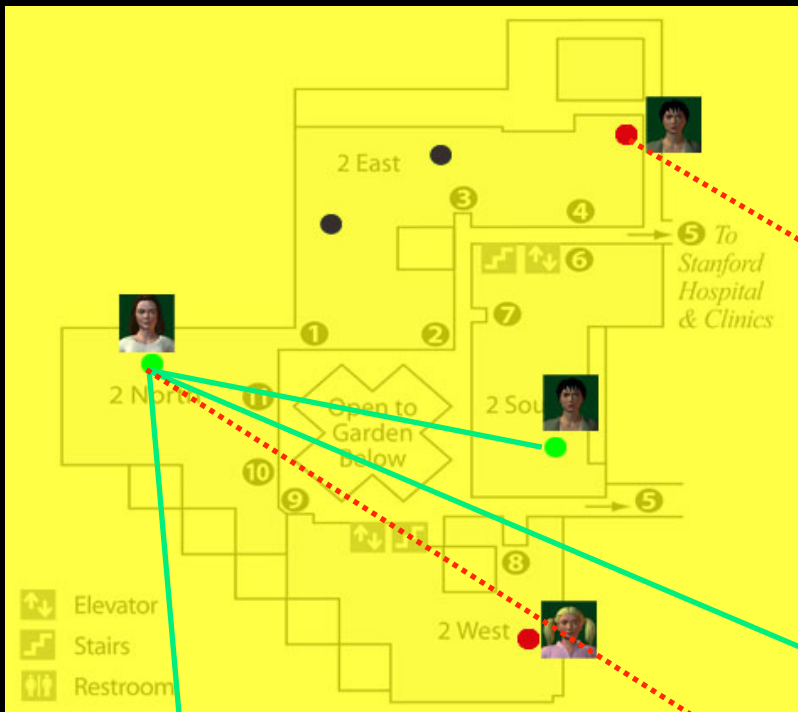




LUCILE PACKARD CHILDREN'S HOSPITAL SCHOOL LEARNING 2013

1

Whitney Birdwell
Carrie Cai
Hannah Cho
Andrew Davis





Lucile Packard
Children's Hospital

The left side of the slide features a vertical gradient of light blue and white stripes. Overlaid on these stripes are several teal-colored circles of varying sizes. A large circle is positioned near the top, with several smaller circles scattered below it, some overlapping the stripes.

LUCILE PACKARD CHILDREN'S HOSPITAL SCHOOL LEARNING 2013

4

Whitney Birdwell
Carrie Cai
Hannah Cho
Andrew Davis

Space 1: New Classrooms

Space Specific Needs	Design Solutions
1. Separate classroom space for K-4, 5-8, 9-12	1. Design the new school with three separate classrooms
2. Teachers and students need sufficient storage	2. Storage cabinets, file storage, walk-in storage closet
3. Teachers need a space for 1:1 tutoring, testing, etc.	3. Create break-out rooms within the classroom
4. Students need sufficient workspace	4. Flexible furniture: moveable, storable, whiteboard tops
5. Need access to power outlets and wide walkways	5. Well designed power supply; room for wheelchairs/ poles
6. Students need a healthy school environment	6. Introduce natural light, plants and color into the classroom

Space 2: Portable Bedside Learning Space

Space Specific Needs	Design Solutions
1. Way for students in isolation to keep up with their schoolwork.	1. A Hospital “Lap-Desk” on wheels that functions as desk space and storage compartment.
2. Way for students to fluctuate between bedside and school learning on a daily basis.	2. Lap-desk includes removable storage bin that can be taken out and carried to school if necessary.
3. Way for teachers to transport materials between school and bedside.	3. Teacher bag with rails for hanging individual student folders.

Space 3: Virtual Classroom

Space Specific Needs	Design Solutions
Way to promote social and communal atmosphere for students in isolation	LPCH Virtual school and classroom that can be logged in from students' personal lap tops
Way to increase self confidence and promote healthy self esteem	Design and maintain one's own cyber identity: avatar.
Way to connect with the school of origin	Information and communication technology in the virtual classroom will allow students to connect from the bedside to their school of origin
Way to increase collaboration and community of practice	Older students can help younger students with their homework and other academic and non-academic topics, including newcomer's adjustment to the hospital life. Promote Legitimate peripheral participation (LPP)



LUCILE PACKARD CHILDREN'S HOSPITAL SCHOOL LEARNING 2013

8

Whitney Birdwell
Carrie Cai
Hannah Cho
Andrew Davis